

ART BRUSSELS 2026

LUMEN

Daniel Enkaoua

ESTHER VERHAEGHE – ART CONCEPTS





ART BRUSSELS

23-26 APRIL

BRUSSELS EXPO, HALLS 5 & 6, PLACE DE BELGIQUE 1,
1020 BRUSSELS

BOOTH 5E-06

LUMEN

Daniel Enkaoua

The presentation LUMEN gathers a focused selection of recent paintings by Daniel Enkaoua, unfolding around the idea of inner light — a light that emanates not from the exterior world, but from within the human presence itself.

Through a group of portraits and still lifes, Enkaoua explores the fragile threshold between visible and invisible, conscious and unconscious. His subjects — Aure, Liel, Natan and Sarah — are rendered with an intensity that resists the anecdotal; they become vessels of silence, reflection, and emotional resonance. In the large reclining figure of Aure bathed in yellow, as in the intimate smaller portraits, light acts as a silent protagonist: it reveals, conceals, and ultimately transforms.

Enkaoua's still lifes extend this meditation on the tangible and intangible. Objects appear suspended in a state of quiet vibration — between material solidity and metaphysical presence. The brushwork oscillates between precision and dissolution, evoking the way perception itself trembles at the border of the tangible and the ephemeral.

Rooted in the tradition of figurative painting yet profoundly contemporary, Enkaoua's work engages the question of what it means to be human: to feel, to love, to endure vulnerability and loss, to find beauty in fragility.

LUMEN is thus not merely an exhibition title, but a statement on the painter's pursuit — a search for that inner clarity, that subtle radiance which persists even in darkness. In Enkaoua's hands, light becomes an act of empathy, a passage toward the soul, and a reminder that every form, every face, carries its own measure of illumination.

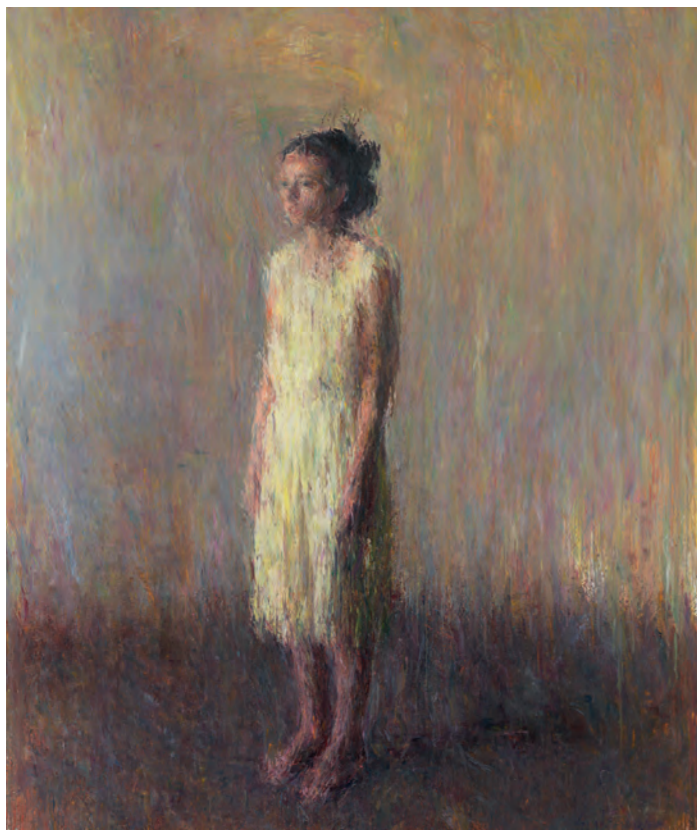
The booth will be conceived as a contemplative space — a pause within the fair's rhythm — where visitors can enter the density of looking and sense the vibration that arises between painting and viewer. Through this focused presentation, Esther Verhaeghe – art concepts seeks to highlight painting as an act of attention and presence: fragile, grounded, and profoundly human.

4

*all works are
oil on canvas*



AURE EN JAUNE ALLONGÉE
2024-25
130 x 260 cm



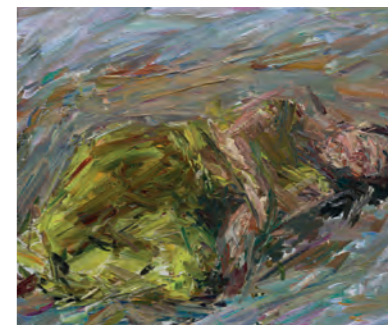
AURE EN JAUNE DE PROFIL
2019-21
235 x 195 cm

6

7



DEUX CITROUILLES SUPERPOSÉES
2020-21
25 x 24,5 cm



AURE EN JAUNE VUE DE HAUT
2025
26 x 31,5 cm

DANIEL ENKAOUA

Born in 1962 in Meaux, France, and based in Barcelona since 2004, Daniel Enkaoua stands among the most compelling figurative painters working today. A graduate of the Bezalel Academy of Arts and Design in Jerusalem, he has developed over three decades a profoundly personal language of painting that bridges the visible and the felt.

His works — portraits, still lifes, and landscapes — are marked by a vibrating surface and an atmosphere of quiet intensity. Through an accumulation of small, luminous brushstrokes, Enkaoua builds images that seem to hover between presence and dissolution, embodying fragility, impermanence, and transformation. Each painting invites slow attention: the viewer is drawn into a space where perception unfolds gradually, revealing a profound sense of humanity and introspection.

Before joining Esther Verhaeghe – art concepts in 2013, Enkaoua was represented by Marlborough Gallery, participating in major international fairs including TEFAF Maastricht, Art Basel, and continues to be presented at Art Cologne and Art Karlsruhe by Galerie Koch. His work has been widely exhibited in Europe and beyond — at the Museet for Religiøs Kunst in Denmark, the Fundació Vila Casas in Barcelona, and the Montserrat Museum, among others — and features in important private and public collections such as the Zabłudowicz Collection (London), The Israel Museum (Jerusalem), and Novartis AG (Basel).

A solo presentation of Daniel Enkaoua at Art Brussels 2026 would reaffirm the relevance of painting as an art of depth and emotion. His presence would bring a contemplative counterpoint to the fair — a moment of stillness, concentration, and renewal within the pace of contemporary art.

8



LES TROIS BLETTES ENTOURANT LE CHOU

2025
130 x 195 cm



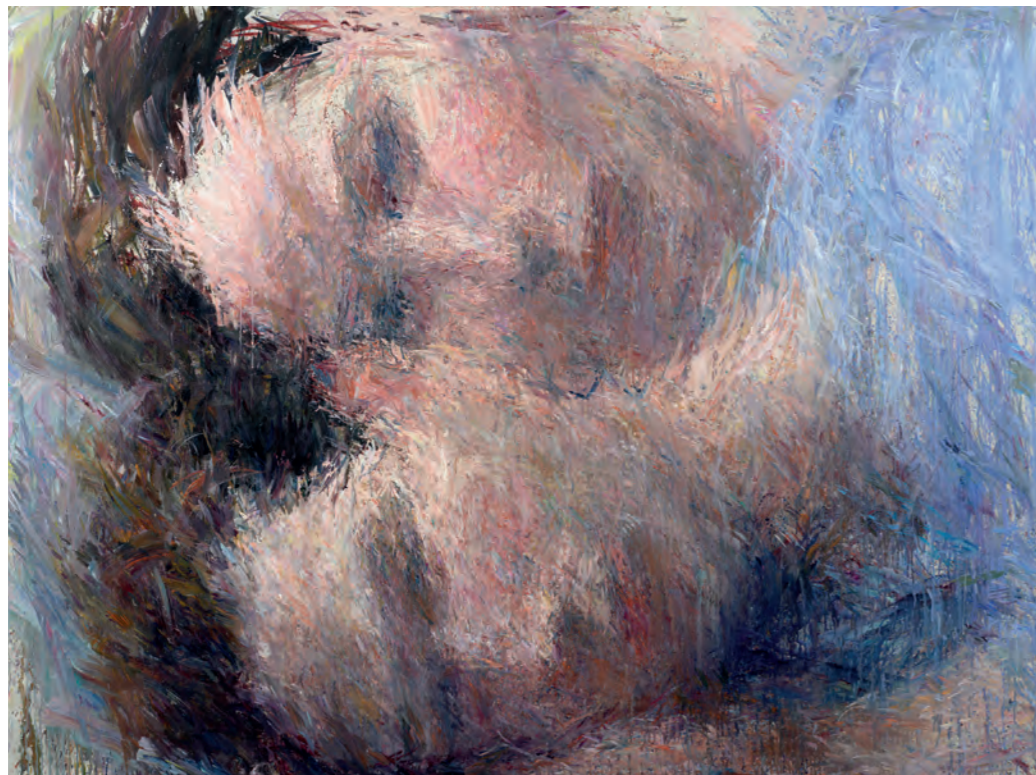
BLETTES ROUGES
2021-22
41 x 81,5 cm

10

11



AURE EN ROUGE ALLONGÉE
2024
30,1 x 48 cm



PORTRAITS DE SARAH ET LIEL AU SOL
2024-26
150 x 200 cm

13

PUBLIC AND PRIVATE COLLECTIONS

Museet for Religjøs Kunst, Lemvig, Denmark
Montserrat Museum, Abadía de Montserrat
Saarländisches Künstlerhaus, Saarbrücken, Germany
Bindella Collection, Zurich, Switzerland

Draiflessen Collection, Mettingen, Germany
Eileen S. Kaminsky Family Foundation ESKFF, New York, USA
Fundació Vila Casas, Barcelona, Spain
Novartis AG, Basel, Switzerland

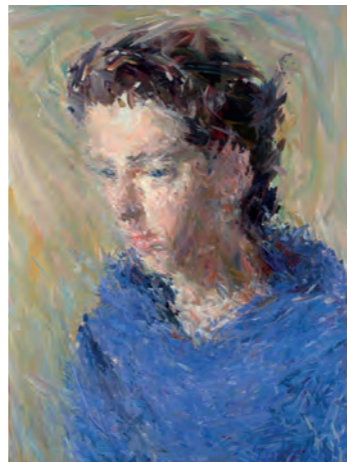
Röling Collection, The Netherlands
The Doron Sebbag Art Collection, Tel Aviv, Israel
The Vera, Silvia and Arturo Schwarz Collection of Israeli Art, The Israel Museum, Jerusalem, Israel
Wiener Museum of Decorative Arts WMODA, Dania Beach, Florida, USA
Zabludowicz Collection, London, UK

PRIZES / AWARDS

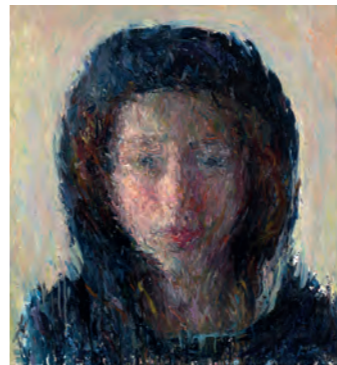
Prix Société des Bains de Mer, Monte Carlo, Monaco, 2004
BP Portrait Award 2010: The Visitor's Choice, third place,
National Portrait Gallery, London, UK, 2010.



LIEL EN CAPUCHE BLEU CARAIBE
2026
95 x 78 cm



NATAN EN BLEU
2025-26
86 x 64 cm

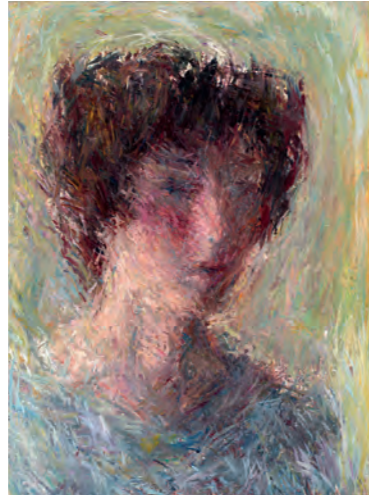


NATAN ET LA CAPUCHE FONCÉE
2018
54 x 50 cm



AURE ET LA CAPUCHE ROUGE ÉCARLATE
2025-26
73 x 65 cm





NATAN EN CONTRE-JOUR
2023
80 x 59,2 cm

18

19



NATAN DE PROFIL EN CONTRE-JOUR
2023
81 x 65 cm

CONTACT

T +32 476 28 37 35
info@esthverhaeghe.com
www.esthverhaeghe.com

OPENING HOURS

FRI – SAT
14:30 - 18 h
and by appointment

ADDRESS

3 Avenue G. Macau
1050 Brussels

Gallery

**ESTHER VERHAEGHE – ART CONCEPTS**

Founded in 2013 by Munich-born Esther Verhaeghe de Naeyer, Esther Verhaeghe – art concepts has evolved from a nomadic and experimental platform into a Brussels-based gallery known for its poetic and reflective curatorial vision. Conceived at first as a gallery without fixed walls, it embraced the challenge of presenting contemporary art in unexpected and transformative spaces — a concept that positioned it early on as an innovative and forward-looking voice within the Belgian art scene.

The gallery's program centers on artists who explore fragility, impermanence, transformation, and perception, questioning how the invisible can be made tangible. These notions form the core of the gallery's curatorial identity, guided by the belief that art reveals the subtle connections between inner and outer worlds.

Through thoughtfully curated exhibitions and international collaborations, Esther Verhaeghe – art concepts encourages meaningful dialogues between works that touch the intimate and the universal, often showing how vulnerability can become a source of strength and renewal. The gallery aims to create spaces for contemplation and exchange — places where art becomes a bridge between thought and emotion, between silence and presence.

We are part of a challenging world with fast changing paradigms. The artists represented by the gallery reflect and question our society. As a gallery we believe in the power of poetic images, those that allow us to reconnect with what we feel essential, first in ourselves, and in our relationship to the world around us.

ESTHER VERHAEGHE – ART CONCEPTS



ART BRUSSELS

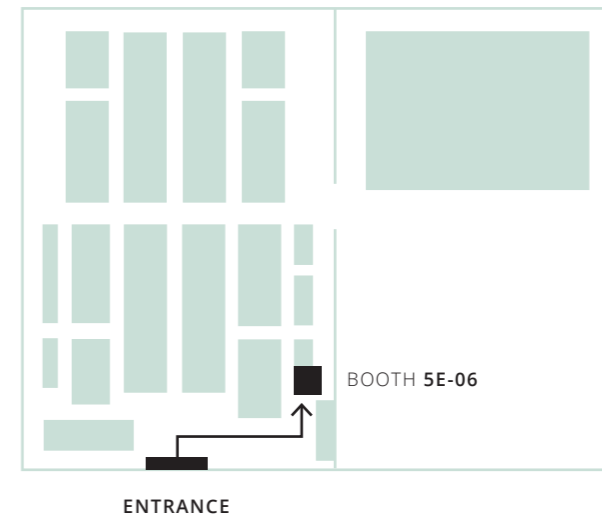
23-26 APRIL

BRUSSELS EXPO, HALLS 5 & 6, PLACE DE BELGIQUE 1,
1020 BRUSSELS

BOOTH 5E-06

CONTACT

T +32 476 28 37 35





ESTHER VERHAEGHE – ART CONCEPTS